

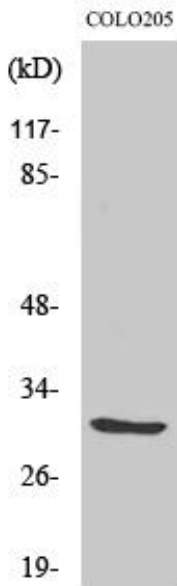


# ABHD11 Polyclonal Antibody

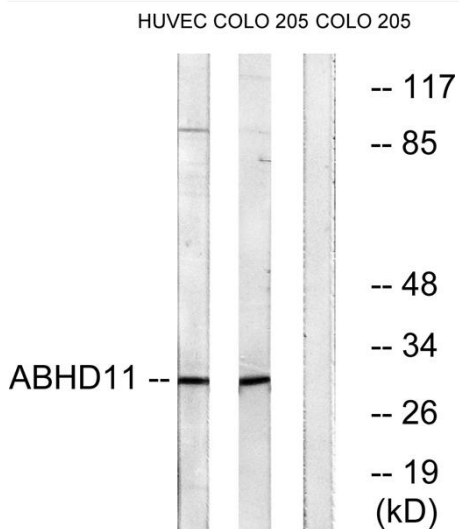
<b>Catalog No</b>	YP-Ab-02450
<b>Isotype</b>	IgG
<b>Reactivity</b>	Human;Rat;Mouse;
<b>Applications</b>	WB;ELISA
<b>Gene Name</b>	ABHD11
<b>Protein Name</b>	Abhydrolase domain-containing protein 11
<b>Immunogen</b>	The antiserum was produced against synthesized peptide derived from human ABHD11. AA range:161-210
<b>Specificity</b>	ABHD11 Polyclonal Antibody detects endogenous levels of ABHD11 protein.
<b>Formulation</b>	Liquid in PBS containing 50% glycerol, 0.5% BSA and 0.02% sodium azide.
<b>Source</b>	Polyclonal, Rabbit,IgG
<b>Purification</b>	The antibody was affinity-purified from rabbit antiserum by affinity-chromatography using epitope-specific immunogen.
<b>Dilution</b>	Western Blot: 1/500 - 1/2000. ELISA: 1/20000. Not yet tested in other applications.
<b>Concentration</b>	1 mg/ml
<b>Purity</b>	≥90%
<b>Storage Stability</b>	-20°C/1 year
<b>Synonyms</b>	ABHD11; WBSCR21; PP1226; Abhydrolase domain-containing protein 11; Williams-Beuren syndrome chromosomal region 21 protein
<b>Observed Band</b>	32kD
<b>Cell Pathway</b>	mitochondrion,
<b>Tissue Specificity</b>	Ubiquitously expressed.
<b>Function</b>	caution:It is uncertain whether Met-1 or Met-10 is the initiator.,sequence caution:Wrong choice of frame.,similarity:Belongs to the AB hydrolase superfamily.,tissue specificity:Ubiquitously expressed.,
<b>Background</b>	This gene encodes a protein containing an alpha/beta hydrolase fold domain. This gene is deleted in Williams syndrome, a multisystem developmental disorder caused by the deletion of contiguous genes at 7q11.23. [provided by RefSeq, Mar 2016],
<b>matters needing attention</b>	Avoid repeated freezing and thawing!
<b>Usage suggestions</b>	This product can be used in immunological reaction related experiments. For more information, please consult technical personnel.



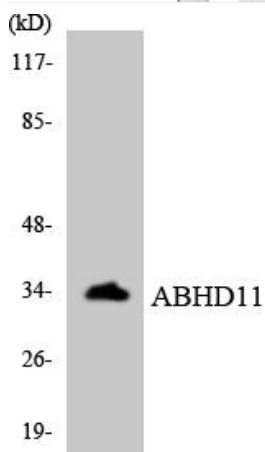
## Products Images



Western Blot analysis of various cells using ABHD11 Polyclonal Antibody



Western blot analysis of lysates from COLO and HUVEC cells, using ABHD11 Antibody. The lane on the right is blocked with the synthesized peptide.



Western blot analysis of the lysates from HeLa cells using ABHD11 antibody.